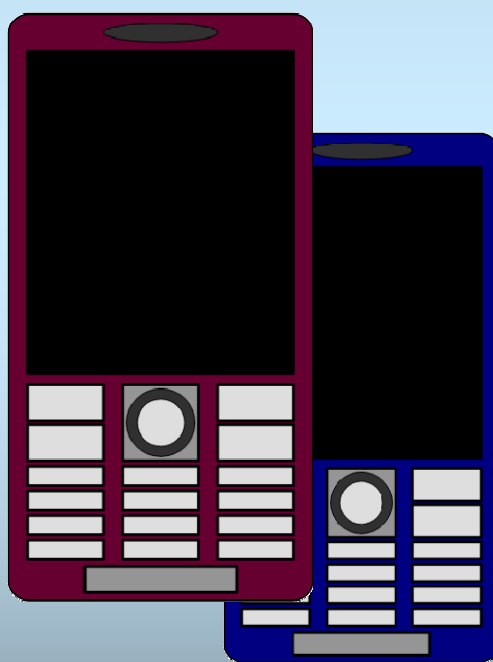




Storage Instructions

- Units with embedded battery -



CONTENTS

1	Storage	3
2	Delivery.....	4
3	Revision History	5



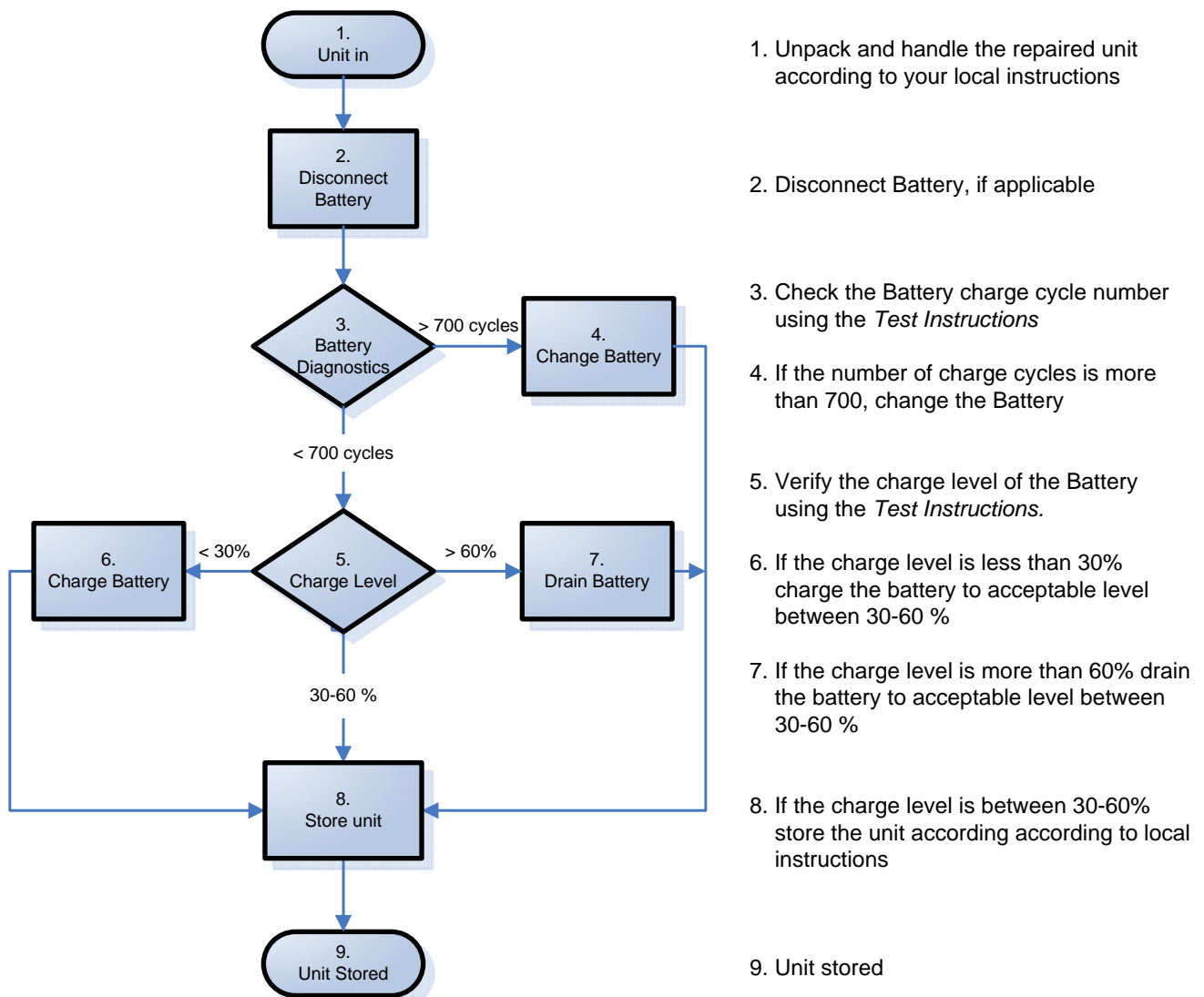
1 Storage

This document is applicable to repaired units only.

Units with embedded batteries should ideally have a battery charge level of 50-60% before storage.

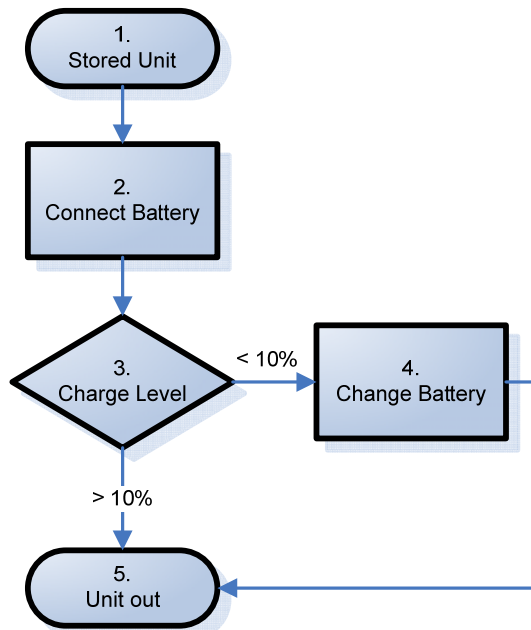
In practice, units with embedded battery should comply with the following requirements:

- Acceptable charge level: 30-60%
- Charge cycle number: < 700 (Note: There isn't any function for counting cycles in E10i & E10a, bullet no 3 & 4 below is not applicable for E10i & E10a)





2 Delivery



1. Take the stored unit

2. Connect Battery, if applicable

3. Verify the charge level of the Battery after storage using the *Test Instructions*

4. If the phone does not start (charge is less than 10%) change the Battery

5. Send out the unit according to *Customization, Build Swap*



3 Revision History

Rev.	Date	Changes / Comments
1	2009-11-19	Initial release
2	2010-05-23	700 charging cycles is not applicably for E10i & E10a.
3	2010-05-24	Due to system failure